

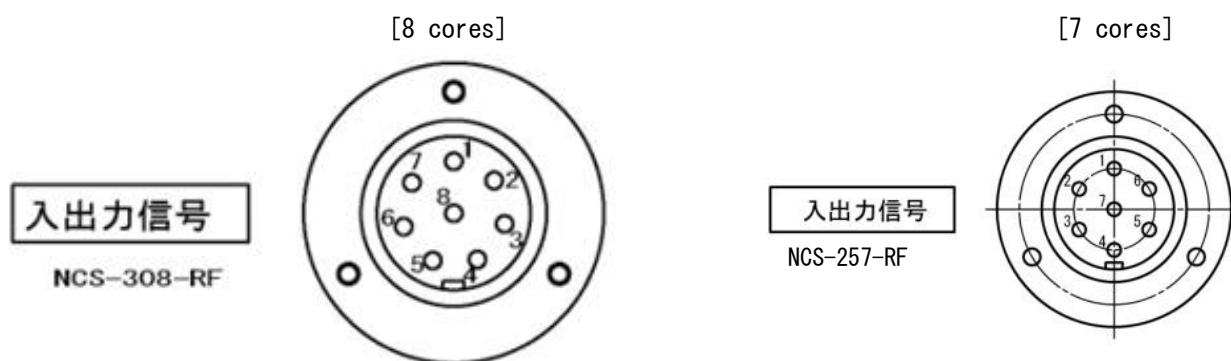
2. Device connection

2.1 Die casting machine connection

Please make sure signal of below can be accepted from die casting machine.

Signal connection of die casting machine side is entrusted to our customers.

①Connector of die casting machine side



[8 cores specification]

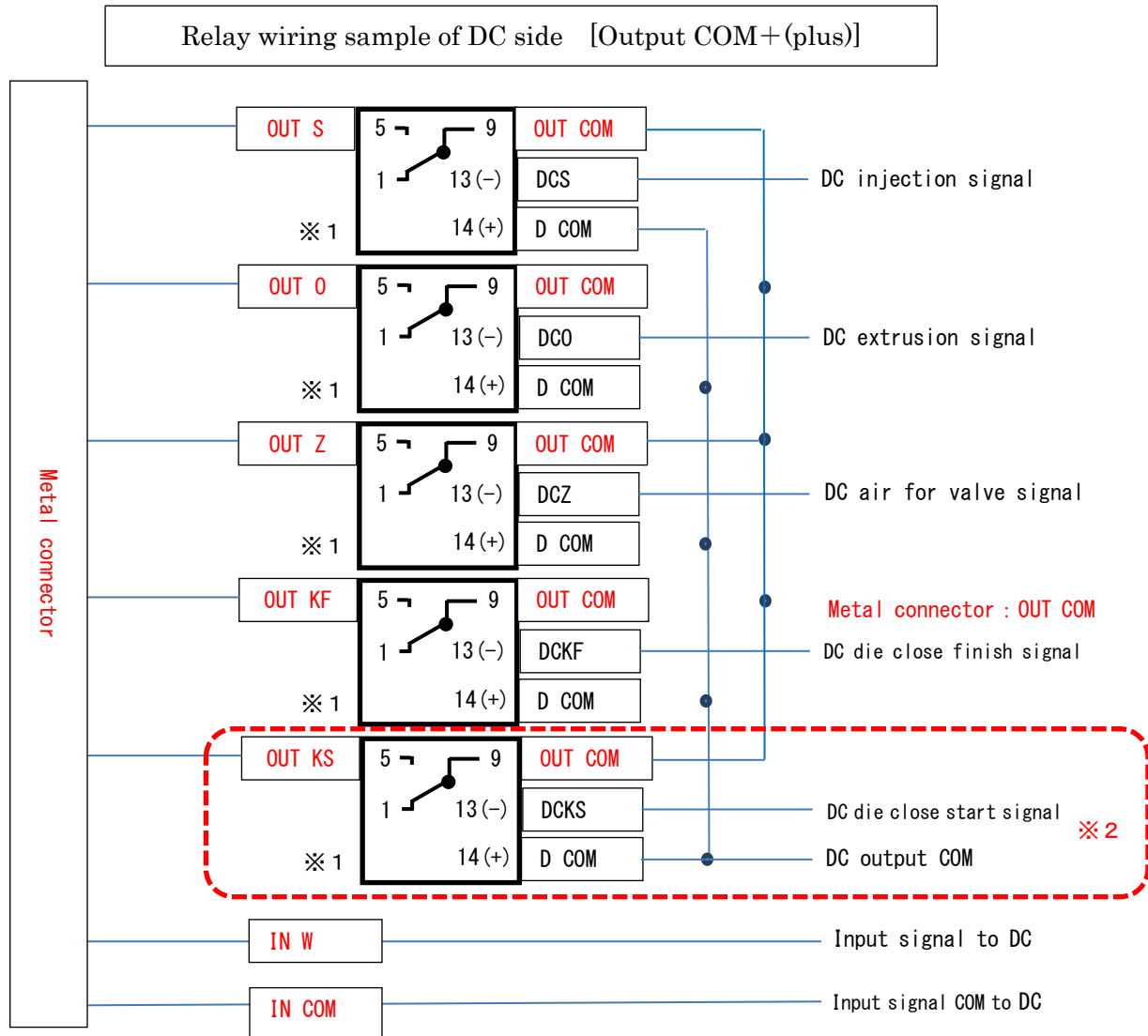
Pin No.	Input · Output signal	Mark tube	Related function
1	OUT COM	OUT COM	—
2	Injection start or vacuum start signal	OUT S	Vacuum suction
3	Extrusion limited signal	OUT O	Air blow, stable air
4	Continuous signal with no intensification	OUT Z	Air for valve ※continuous signal during low speed or high speed of die casting machine.
5	Die close finish signal	OUT KF	Cleaning finish
6	Die close start signal	OUT KS	Stroke reset, Cleaning start
7	IN COM	IN COM	—
8	Input signal	IN W	Device abnormality output/Normality output

[7cores specification]

Pin No.	Input · Output signal	Mark tube	Related function
1	OUT COM	OUT COM	—
2	Injection start or vacuum start signal	OUT S	Vacuum suction
3	Extrusion limited signal	OUT O	Air blow, stable air
4	Continuous signal with no intensification	OUT Z	Air for valve ※continuous signal during low speed or high speed of die casting machine.
5	Die close finish signal	OUT KF	Cleaning start
6	IN COM	IN COM	—
7	Input signal	IN W	Device abnormality output/Normality output

②Signal wiring for die casting machine side

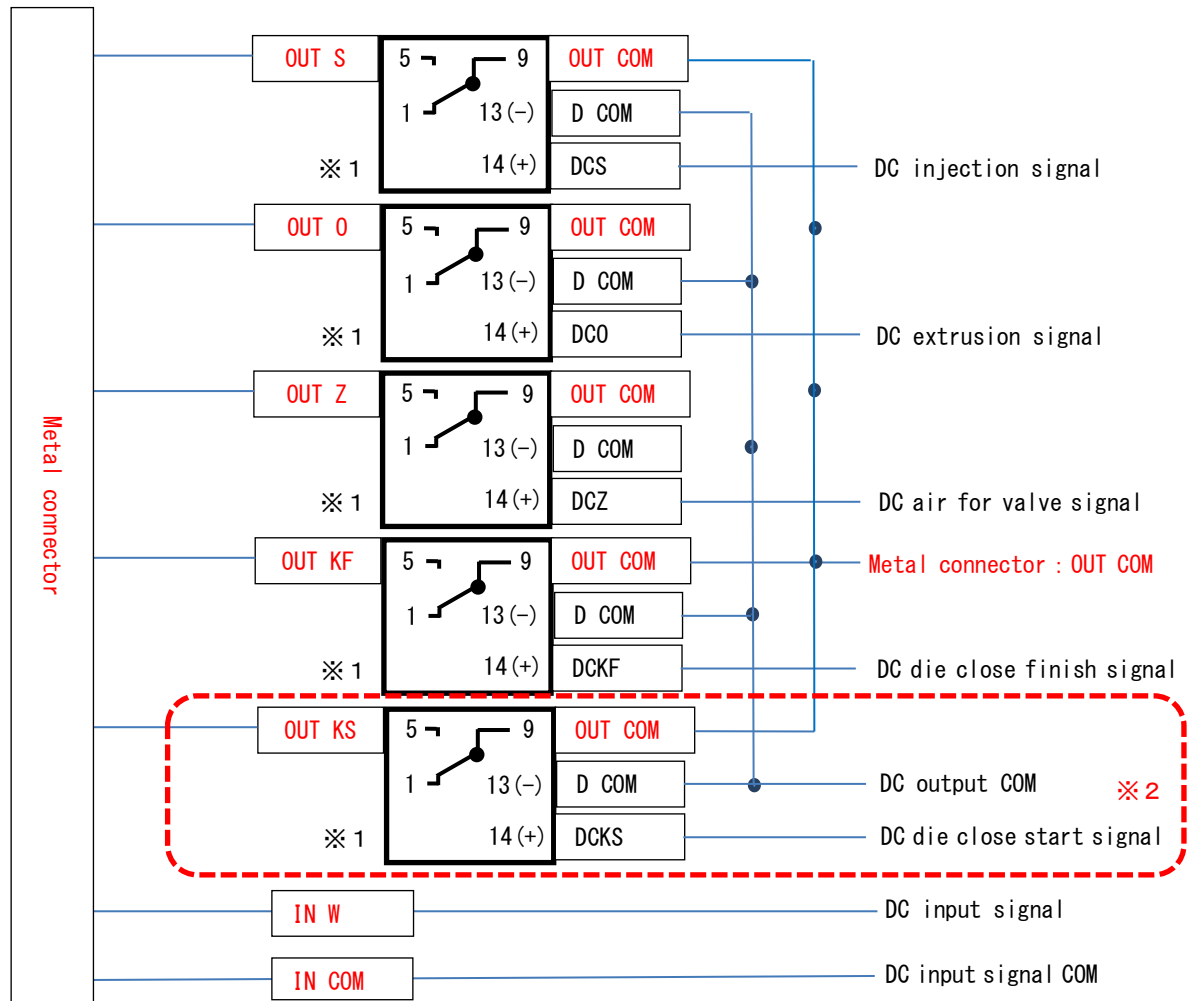
Wiring method (Relay sample 1 of die casting machine control box)



- ※ 1 Relay pin arrangement
OMRON MY2N consult
- ※ 2 It is not necessary for 7 pins signal.

Wiring method (Relay sample 2 of die casting machine control box)

Relay wiring sample of DC side [Output COM+(minus)]



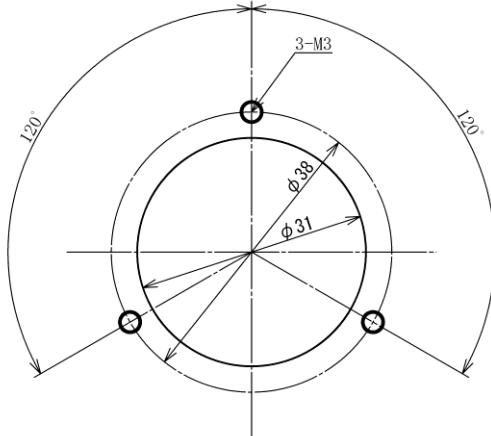
- ※ 1 relay pin arrangement
OMRON MY2N consult
- ※ 2 It is not necessary for 7 pins signal.

③ Bundled metal connector

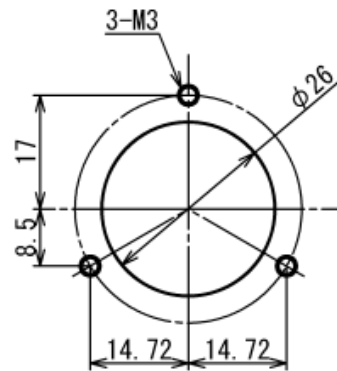
Y shaped terminal has installed



[8 pins dimension]



[7 pins dimension]



④ Signal cable connection



- Please make sure power supply switch is off when connect power supply cable.
- After power supply cable is connected, there are electricity exists somewhere of control box, please cut off power supply when wiring work is being made.